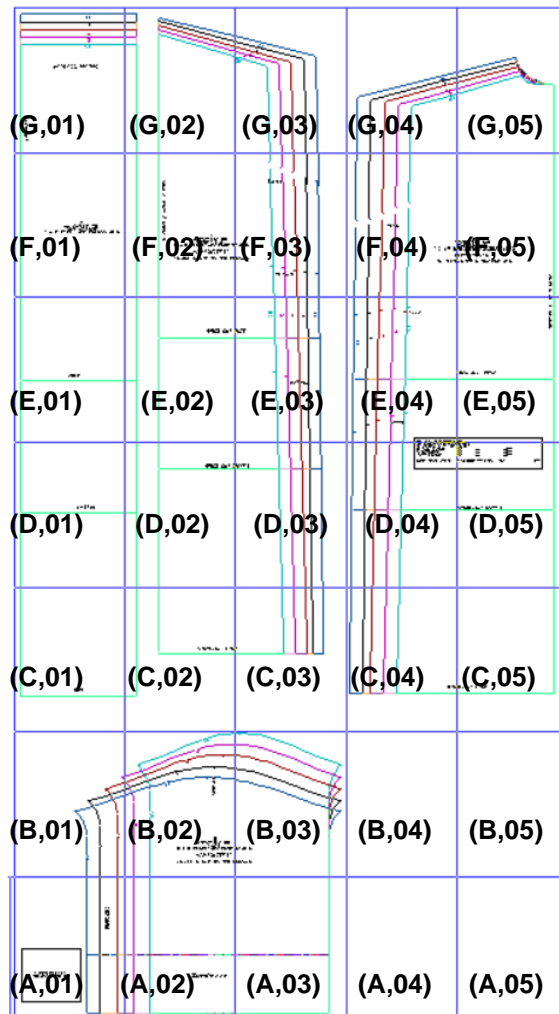


	XS	S	M	L	XL
Stoffbreite 140cm					
Kurz	1,30m	1,30m	1,30m	1,30m	1,30m
Mittel	1,70m	1,80m	1,80m	1,80m	1,80m
Lang	2,10m	2,50m	2,50m	2,50m	2,50m
Stoffbreite 150cm					
Kurz	1,30m	1,30m	1,30m	1,30m	1,30m
Mittel	1,50m	1,80m	1,80m	1,80m	1,80m
Lang	1,90m	2,50m	2,50m	2,50m	2,50m
Stoffbreite 160cm					
Kurz	1,30m	1,30m	1,30m	1,30m	1,30m
Mittel	1,50m	1,50m	1,80m	1,80m	1,80m
Lang	1,90m	1,90m	2,50m	2,50m	2,50m



### Maßtabelle Körpermaße

In cm	<b>XS</b>	<b>S</b>	<b>M</b>	<b>L</b>	<b>XL</b>
<b>BU</b>	<b>32/34</b> 74-81	<b>36/38</b> 82-89	<b>40/42</b> 90-97	<b>44/46</b> 98-107	<b>48/50</b> 108-119
<b>TU</b>	62-67	68-75	73-83	84-93	94-101
<b>HU</b>	84-91	92-98	99-104	105-112	113-121

Das Schnittmuster wurde für eine Referenz-Körperhöhe von 168 cm entwickelt.